

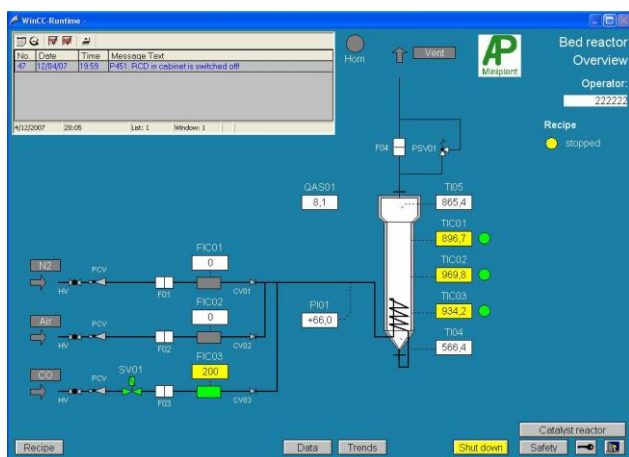
Fluidized Bed Reactor



- 3 gas feeds
- Tubular quartz glass reactor ($T_{\max} = 1000^{\circ}\text{C}$)
- Compact design fitting into laboratory fume hood
- Fully automated

Technical Data

Dimension plant W x D x H	960 x 1770 x 1100 mm
Mass of the unit	131 kg
Electrical supply	AC 220 V / 60 Hz +- 10 %, max. 3 kW
Main fuse	16 A
Electrical connection	1 phase + neutral + potential Earth, CEE Plug 16 A
Ambient conditions	5 to 40 °C, max. humidity 90% @20°C
Pressure conditions	-1 to 0.5 bar
Temperature conditions	Reactor & furnace: 0-1000 °C After reactor: 0 to 200 °C
Reactor type	Tubular glass reactor
Overpressure protection	Safety valve, opening pressure: 0.5 bar
Gas supervision	CO sensor
Gas supplies	Pressure 3.5 - 5 bar absolute, Gases: Nitrogen, air and carbon monoxide, total gas flow: 2500 l/h

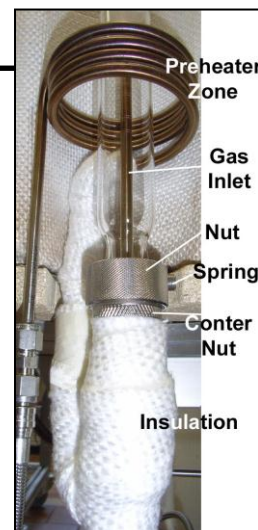


control system operating screen



reactor top

reactor inlet



Product Overview



Smart Solutions for Small Plants

AP-Miniplant GmbH & Co. KG
Hirtenrasen 64
D-37318 Lindewerra

Phone: +49 (0) 36087 976-0
Fax: +49 (0) 36087 976-22

Email: info@miniplant.de
Internet: www.miniplant.de